

G3 Pro

Facial Recognition Terminal with Computer Vision Technology

Compatible with
ZKProSecurity easy TimePro



G3 Pro is powered by latest Computer Vision Technology for proactive facial recognition, which means the terminal can perform bio-authentication with a user's facial attributes as soon as the sensor detects a face.

Facial patterns are reliable human identifiers as the details are extremely hard to be duplicated, thus, together with the powerful algorithm, users may enjoy the terminal's enhanced anti-spoofing ability.

Eliminating hygienic concerns, G3 Pro, equipped with a novel face tracking technique allowing extra wide-angle tolerance, the huge capacity of 12,000 face templates, and a 1.4GHz quad-core CPU, extracts facial pattern for analysis at long distance for recognition less than 0.35s. With computer vision technology and advanced facial algorithms users no longer need to struggle to align their face at specific angle or position for proper face images to be acquired.

Features



Modern Design & Interactive UI



Revolutionary SilkID
Fingerprint Sensor



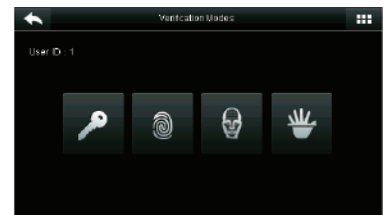
Multiple Verification Modes:
Face / Fingerprint / Card /
Password



Outstanding Performance With
Dry, Wet and Rough Fingers



Simple Management & Scalability



Specifications (G: GL Exclusive Feature)

Capacity

Fingerprints	20,000
G Faces	12,000
Cards	20,000
Transactions	200,000

Hardware

- G 1.4GHz Quad Core CPU
- G Memory 1G RAM / 1G Flash
- SilkID Fingerprint Sensor
- G 4.3 Inches Touch Screen
- Hi-Fi Voice & Indicator
- Tamper Switch Alarm

Optional Functions

- HID Proxy / RFID S50/S70 IC Card (13.56 MHz) Reader
- G Wi-Fi / 3G
- External Printer
- G Battery (2,000 mAh)
- G POE (Standard IEEE 802.3at)

Communication

TCP/IP
USB Host
Wiegand Output

Standard Functions

ID Card / Work Code / WDMS
DST / SMS / Bell Schedule
Attendance Status Auto-Switch
Record Query / Photo ID
Custom Wallpaper & Screen Saver

Compatibility

easy TimePro
ZKBioSecurity (T&A)
easy WDMS

Access Control Interface

Lock Relay Output
Alarm Output
Exit Button
Door Sensor
External Bell

Special Functions

- G Multiple Biometric Verification Modes
- G Alive Face Detection
- G Duplicate Face Detection

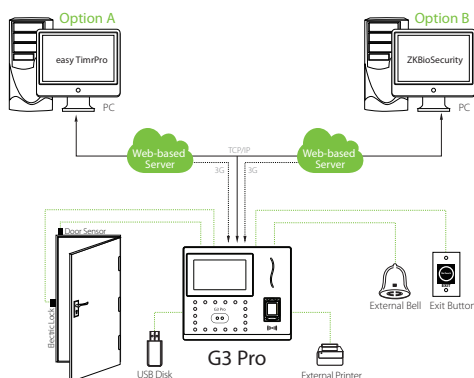
Additional Info

Working Temperature: 0 °C ~ 45 °C
Dimensions: 199.2 × 171.8 × 96.9 mm
Algorithms: ZKFace v12.0 & ZKFinger v10.0 & ZKPalm V12.0
Fingerprint: FAR≤0.0001%; FRR≤0.01%
Face: FAR≤0.001%; FRR≤1%

Power

Operating Voltage 12V DC
Current Draw < 500 mA

Configuration



Dimensions (mm)

